



CN890S-ST

Construction Nailer



OPERATING & MAINTENANCE MANUAL



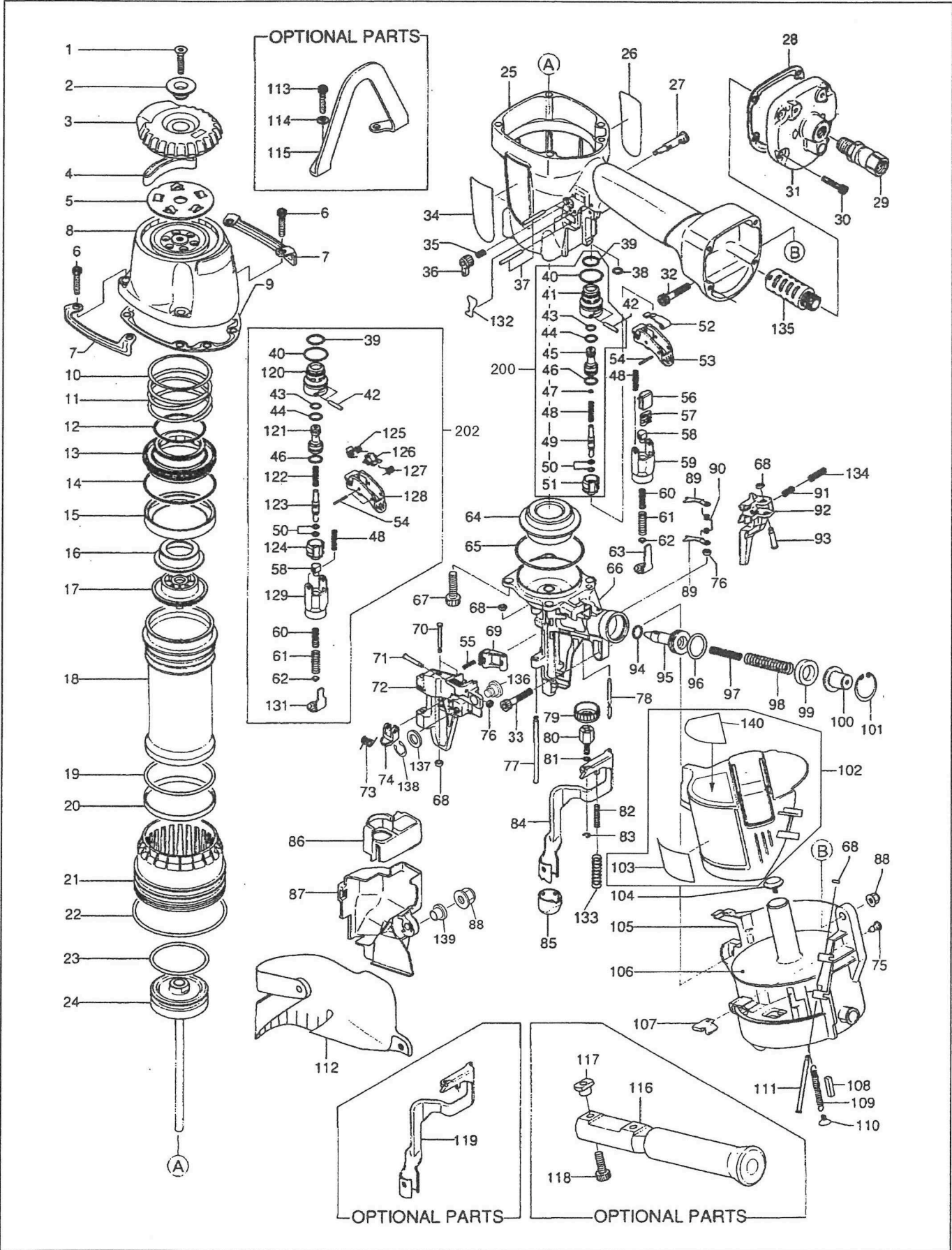
WARNING

BEFORE USING THIS TOOL, STUDY THIS MANUAL TO ENSURE SAFETY WARNING AND INSTRUCTIONS.

KEEP THESE INSTRUCTIONS WITH THE TOOL FOR FUTURE REFERENCE.

CN890S-ST

**EXPLODED
VIEW AND SPARE
PARTS LIST**



Parts List of MAX CN890S-ST Pneumatic Nailer

Part No	Part Code	Description	Part No	Part Code	Description	Part No	Part Code	Description
1	AA82411	SCREW M6 X 27	48	KK23129	COMP. SPRING 3129	96	HH11143	O-RING AP21
2	KN11393	EXHAUST COVER HOLDER	49	CN35128	TRIGGER VALVE STEM	97	KK23737	COMPRESSION SPRING 3737
3	CN35294	EXHAUST COVER	50	HH11901	O-RING 1.4 X 2.5	98	KK23225	SPRING 3225
4	CN35296	EXHAUST FILTER B	51	CN33910	TRIGGER VALVE CAP	99	CN31570	FEED PISTON STOP
5	CN35295	EXHAUST FILTER A	52	CN35115	CONTACT LEVER	100	CN37538	SPRING COLLAR
6	BB40208	BOLT 6 X 28	53	CN35001	TRIGGER	101	JJ22407	C-RING 26
7	CN35635	PROTECTOR	54	FF22402	SPRING PIN 3X16	102	CN81401	MAGAZINE CAP ASSY
8	KN70016	CYLINDER CAP UNIT	55	KK23282	COM. SPRING 3282	103	CN38438	CAUTION PLATE
9	CN35298	CYLINDER CAP SEAL	56	CN35656	LEVER	104	CN37428	POST CAP
10	CN35323	PLAIN WASHER	57	CN34500	LEVER SPRING	105	CN35317	MAGAZINE
11	KK23713	COMPRESSION SPRING 3713	58	CN35059	ARM GUIDE PIN	106	CN35318	NAIL SUPPORT
12	HH14906	O-RING AS 568-133	59	CN35002	ARM GUIDE	107	CN35340	MAGAZINE WEAR CLIP
13	KN11391	HEAD VALVE PISTON	60	KK23735	COMPRESSION SPRING 3735	108	CN30601	SPACER
14	HH19161	O-RING A 3.1 X 66.4	61	KK23736	COMPRESSION SPRING 3736	109	KK13144	SPRING 3144
15	CN35307	HEAD VALVE SEAL	62	CN35004	CONTACT BUMPER	110	CN37383	SPRING HOOK
16	CN35334	PLAIN WASHER	63	CN35003	CONTACT ARM A	111	FF41287	PIN 1287
17	CN35302	PISTON STOP	64	CN35327	BUMPER	112	CN35915	DUST COVER
18	CN35306	CYLINDER	65	HH14729	O-RING AS568-144	113	BB40211	BOLT 6 X 35
19	HH12108	O-RING AG60	66	CN35312	NOSE	114	EE33111	PLAIN WASHER 6
20	CN35325	CHECK VALVE	67	BB40221	SCREW M8 X 25	115	CN35642	HANGER
21	CN35308	CYLINDER RING	68	EE39602	WASHER 7	116	CN80525	GRIP ASSY
22	HH12117	O-RING AG85	69	HN10477	RATCHET	117	CN35641	SPECIAL NUT
23	HH19218	O-RING 4.5 X 48.7	70	FF41258	PIN 1258	118	BB40411	BOLT 6 X 20
24	CN35639	MAIN PISTON UNIT	71	FF41599	PIN 1599	119	CN35337	CONTACT ARM C
25	CN80515	FRAME	72	CN35315	DOOR	120	CN31323	TRIGGER VALVE HOUSING
26	CN35636	WARNING LABEL (FRAME)	73	KK33261	TORSION SPRING 3261	121	CN33627	PILOT VALVE
27	CN35075	TRIGGER LOCK LEVER	74	CN33679	DOOR LATCH	122	KK24123	COMPRESSION SPRING 4123
28	CN35331	END CAP SEAL	76	EE39609	RUBBER WASHER 1.8 X 6 X 2	123	CN33723	TRIGGER VALVE STEM
29	TT05426	AIR PLUG FMP3B	77	FF31520	STRAIGHT PIN 1520	124	CN31346	TRIGGER VALVE CAP
30	BB40210	SCREW M5 X 20	78	FF31272	STRAIGHT PIN 1272	125	KK33247	SPRING 3247
31	CN35686	END CAP	79	CN35007	ADJUST DIAL	126	TA16138	S T LEVER
32	BB40438	BOLT 6 X 32	80	CN35337	CONTACT ARM C	127	KK33144	TORSION SPRING 3144
33	BB40487	BOLT 6 X 35	81	HH11903	O-RING 1A 1.2 X 4	128	CN35714	TRIGGER
34	CN35637	LABEL	82	KK23792	COMPRESSION SPRING 3792	129	CN37842	CONTACT ARM GUIDE A
35	KK23507	SPRING 3507	83	JJ10404	E-RING 3.2	131	CN35140	CONTACT ARM A
36	CN35074	TRIGGER LOCK DIAL	84	CN70048	CONTACT ARM B UNIT	133	KK23793	COMPRESSION SPRING 3793
37	FF21611	ROLL PIN 3 X 32 AW	85	CN36130	CONTACT TIP	134	KK23788	COMP. SPRING 3788
38	HH11105	O-RING AP7	86	CN35889	SPACER	135	CN35685	END CAP FILTER SA-10
39	HH11125	O-RING AP12	87	CN35632	COVER	136	FF41837	STEP PIN 1837
40	HH11138	O-RING AP20	88	CC00402	NUT M6	137	EE39814	PLAIN WASHER "D"
41	CN33909	TRIGGER VALVE HOUSING	89	CN35336	CHECK PAWL	138	JJ10405	RETAINER "E" 4MM
42	FF30161	PIN 161	90	KK33221	TORSION SPRING 3221	139	CN32170	COLLAR
43	HH11119	O-RING AP6	91	KK23710	COMP. SPRING 3710	140	CN38542	WARNING LABEL ISO
44	HH11209	O-RING 1BP7	92	HN10476	FEED PAWL	200	CN80546	TRIGGER VALVE KIT (CN890S)
45	CN35655	PILOT VALVE	93	FF42216	STEP PIN 2216	201	CN80607	O-RING KIT FOR CN890S
46	HH11113	O-RING AP9	94	HH11132	O-RING 1AP10A	202	CN80524	SEQUENTIAL VALVE KIT
47	CN31436	PILOT ORIFICE	95	CN35314	FEED PISTON			